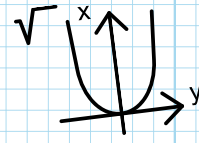
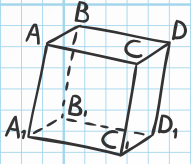
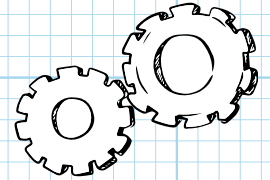
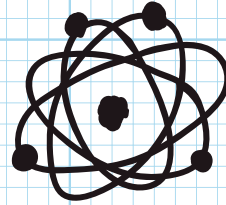
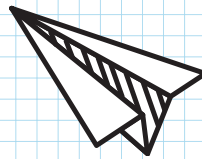
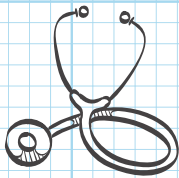
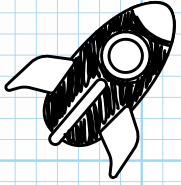


# What is STEM/CTE?

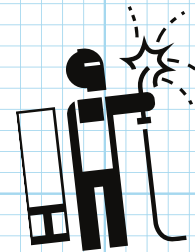
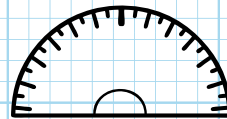
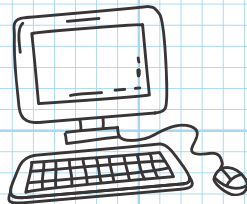
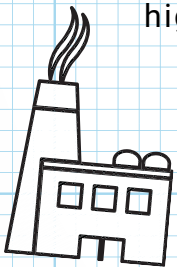
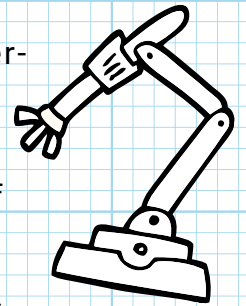
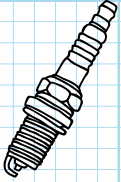


## STEM (SCIENCE, ENGINEERING, TECHNOLOGY, AND MATH)

learning focuses on the interconnected content areas of science, technology, engineering and math and recognizes the importance of inquiry, investigation and innovation to power our economy and advance our society. We need our future leaders—today's learners—to have the hands-on, real world experiences that will help them develop the skills required to drive and thrive in a strong, information-age economy.



**CTE, sometimes called Career and Technical Education,** is career-focused experiential learning that provides students with opportunities to explore careers, gain marketable skills, and prepares them to be college and career-ready for a wide range of high-wage, high-skill, high-demand careers.



**STEM and CTE are highly complementary.** They share intended outcomes, applied learning approaches, and the preparation they offer for high-demand careers. In particular, both CTE and STEM engage and motivate students through hands-on, real-world learning; both hone creativity, critical thinking, problem-solving, communication, and teamwork; and both prepare students for well-paying careers and successful futures.

